

Piedmont Environmental Center

Hiking Trails



HIGH POINT
North Carolina





Scan QR code with phone
camera for more information



#1

BILL FAVER LAKESHORE TRAIL



Location

1220 Penny Road,
High Point, NC



Trail Features

1.8-mile loop
Trailhead close to the parking lot
Connects to many of the other trails
Scenic views of High Point City Lake
High likelihood of seeing wildlife



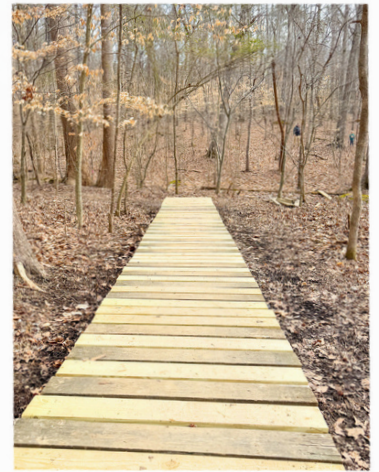
Trail Types

Hiking Only
Dogs Allowed on Leash



Trail Information

This trail takes about 45 minutes to complete with approximately 190 feet of elevation gain. The terrain is mixed, so hikers will encounter minor hills, rooty areas, dirt, and boardwalks.





Scan QR code with phone
camera for more information



#2

FIDDLEHEAD TRAIL



Location

1220 Penny Road,
High Point, NC



Trail Features

0.2 mile out-and-back (0.4 miles total)
Connects to two points on the Bill Faver trail
Perfect for beginners or can be paired with
other trails
Close to the parking lot



Trail Types

Hiking only
Dogs Allowed on Leash



Trail Information

The 0.2 mile trails takes about 15 minutes to complete. The terrain is mostly dirt with occasional boardwalks and rooty places. You must go down the Bill Faver Lakeshore Trail to access this trail.





Scan QR code with phone
camera for more information



#3

PINE THICKET TRAIL



Location

1220 Penny Road,
High Point, NC



Trail Features

0.2 mile out-and-back (0.4 miles total)
Connects to the Bill Faver Trail, Fiddlehead
Trail, and the Dogwood Trail
Winds through pine forests
Easy to turn this into a loop when paired with
other trails



Trail Types

Hiking only
Dogs Allowed on Leash



Trail Information

This trail takes about 15 minutes to complete.
However, you must hike a portion of the Bill
Faver Lakeshore Trail to access this trail.





Scan QR code with phone camera for more information



#4

DOGWOOD TRAIL



Location

1220 Penny Road,
High Point, NC



Trail Features

0.4 mile out-and-back trail (0.8 miles total)

Features wide paths

Can only be accessed from the Bill Faver
Lakeshore Trail

Combine with other trails to make a loop

Use this trail as a shortcut to make the Bill Faver
loop shorter if needed



Trail Types

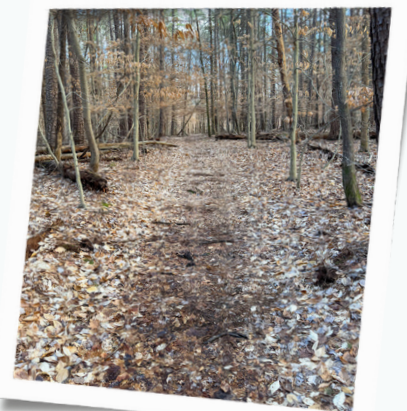
Hiking only

Dogs Allowed on Leash



Trail Information

It takes about 20 minutes to complete. It can only be accessed from the Bill Faver Lakeshore Trail or the Pine Thicket Trail. It has mostly dirt terrain with some boardwalks.





Scan QR code with phone
camera for more information



#5

CHICKADEE TRAIL



Location

1220 Penny Road,
High Point, NC



Trail Features

0.3 mile out-and-back trail (0.6 miles total)
Offers direct access to the NC Mapscape
Turn it into a loop with the Bill Faver
Lakeshore Trail and the Fiddlehead Trail
Opportunities to see wildlife



Trail Types

Hiking only
Dogs Allowed on Leash



Trail Information

The trail takes about 15 minutes to complete.
The terrain is a mixture of sand, dirt, gravel,
and boardwalk. Pair it with the Bill Faver
Lakeshore Trail to make a loop.





Scan QR code with phone
camera for more information



#6

RACCOON RUN TRAIL



Location

1220 Penny Road,
High Point, NC



Trail Features

0.6-mile loop that spurs off of the Bill Faver
Lakeshore Trail
Winds the shores of High Point City Lake
Plenty of parking & restrooms at the trailhead
Many opportunities to see wildlife around the
lake



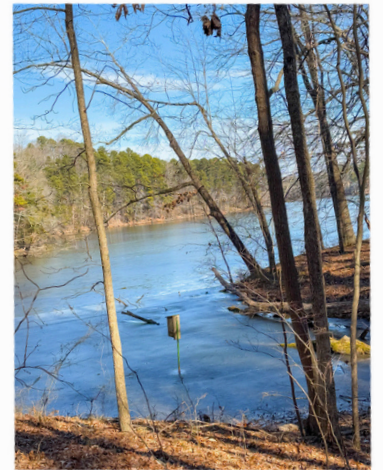
Trail Types

Hiking only
Dogs Allowed on Leash



Trail Information

This trail takes about 30 minutes to complete. It
is mostly dirt terrain with occasional
boardwalks, and it can only be accessed from
the Bill Faver Lakeshore Trail. It is one of our
favorite trails at the PEC.





Scan QR code with phone
camera for more information



#7

WILDFLOWER TRAIL



Location

1220 Penny Road,
High Point, NC



Trail Features

0.4 mile loop
Marked with rocks that line the trail
Trailhead close to the PEC building
Perfect for a family outing
Combine with other trails to extend the hike



Trail Types

Hiking only
Dogs Allowed on Leash



Trail Information

This trail takes about 15 minutes to complete.
The trail is mostly dirt with some roots
throughout the trail. The entrance is beside the
PEC building where birdwatching opportunities
and front-porch sitting abound.





Scan QR code with phone
camera for more information



#8

DEEP RIVER TRAIL



Location

1220 Penny Road,
High Point, NC



Trail Features

2.3 mile out-and-back trail (4.6 total miles)

Can be combined with the Bicentennial
Greenway to make a loop

Also connects to trails that lead to Gibson Park

Provides the most scenic diversity among the
PEC trails



Trail Types

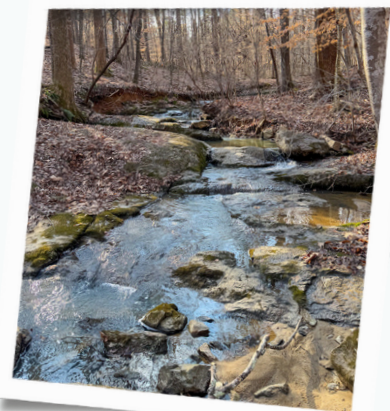
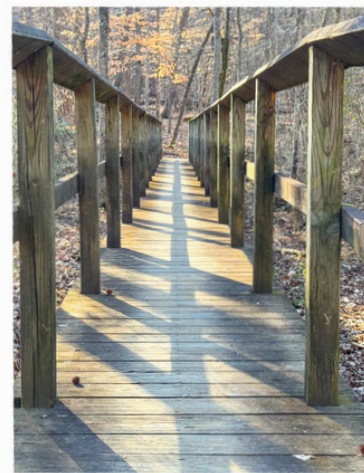
Hiking only

Dogs Allowed on Leash



Trail Information

This trail takes about 2 hours to complete with
about 375 feet in elevation gain. The trail is
mostly dirt and natural terrain with occasional
boardwalks. This trail contours the High Point
City Lake.





Scan QR code with phone
camera for more information



#9

HOLLIS ROGERS PINE WOODS TRAIL



Location

1220 Penny Road,
High Point, NC



Trail Features

0.4 miles one-way
Cuts across the Deep River Trail
Can be made into a small loop
It is believed that some of the pine trees in
this area were planted during Franklin D.
Roosevelt's New Deal era.



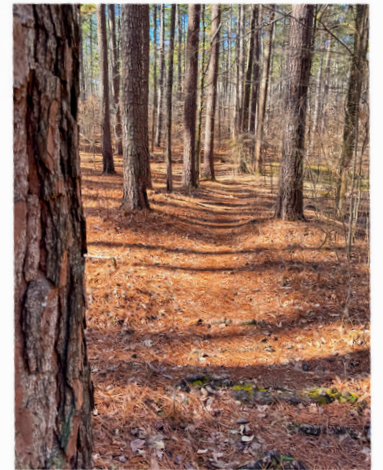
Trail Types

Hiking only
Dogs Allowed on Leash



Trail Information

This trail takes about 15 minutes to complete.
The terrain is mild and mostly dirt along the
path. It can only be reached from the Deep
River Trail, which also requires hikers to
complete part of the Bicentennial Greenway to
get to it.





PEC

Hiking Trails

	DIFFICULTY	HIKE	DISTANCE (ONE WAY)	CHECK TO COMPLETE
BILL FAVER LAKESHORE TRAIL	●		1.8 MILES	
FIDDLEHEAD TRAIL	●		0.2 MILES	
PINE THICKET TRAIL	●		0.2 MILES	
DOGWOOD TRAIL	●		0.4 MILES	
CHICKADEE TRAIL	●		0.3 MILES	
RACCOON RUN TRAIL	●		0.6 MILES	
WILDFLOWER TRAIL	●		0.4 MILES	
DEEP RIVER TRAIL	■		2.3 MILES	
HOLLIS ROGERS PINE WOODS TRAIL	●		0.4 MILES	

● EASY ■ INTERMEDIATE ◆ ADVANCED